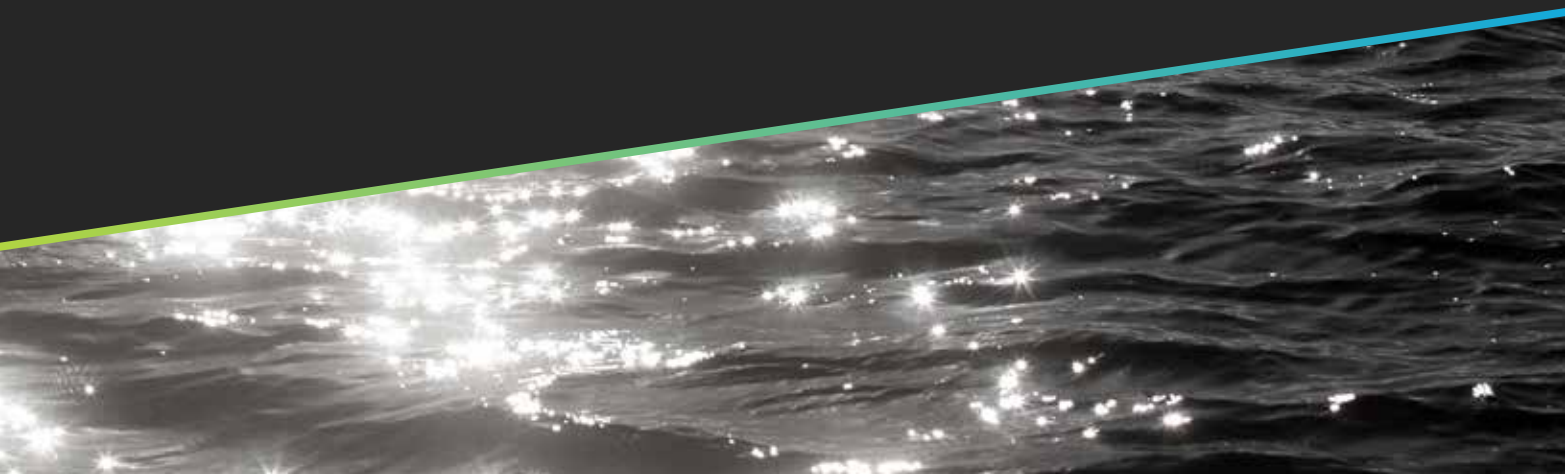


EIVA

Equipment and software

– a technology match made under the sea...

Bringing your subsea data over the horizon
with seamless automation and autonomy





Software

Optimising the businesses of offshore and shallow water professionals with sustainability as our beacon

The energy, construction and science industries are experiencing a need for solutions that will streamline operations above and below the water's surface.

It is possible to achieve this while reducing environmental and operational risk, and increasing cost- and time-efficiency... which is where EIVA's solutions can be brought on board.

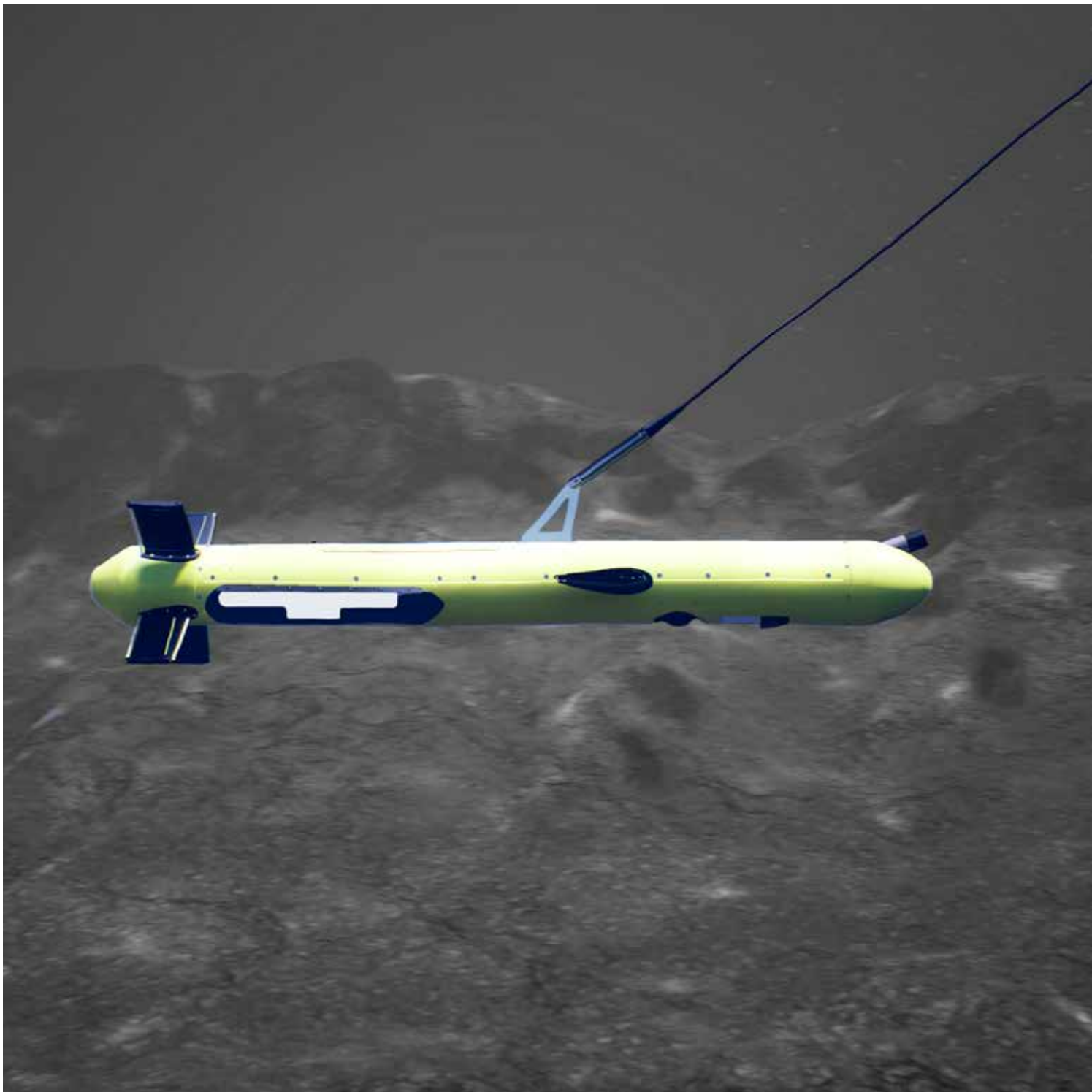
Integrated system solutions
Equipment

Rental

24/7 support

Training





For over-the-horizon, remote and on-site operations with features for automation and autonomy ... we make sure you're fully equipped

EIVA is an international provider of high-end software and hardware solutions.

More than 45 years of expertise in the offshore and shallow water industries.

In-house, experienced staff of software and hardware engineers, surveyors and technicians.

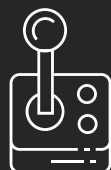
Part of the Covelya Group, which aims to foster synergistic partnerships between the operating companies to exploit technologies, products and knowledge.





Cable, pipe & asset inspections

Market-leading 3D software for subsea inspections of any type



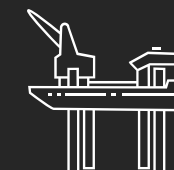
ROV autonomy & manual steering

A complete software solution for ROV operations



Cable route planning

Software for advanced cable route planning and cable lay simulations



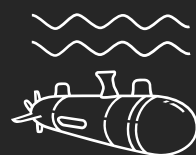
Jack-up operations

Combining software with precise positioning sensors for pin-point jack-up positioning



Hydrographic surveys

Software for USV- and vessel-based operations, bringing automation into the loop



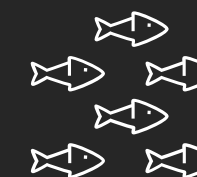
AUV autonomy & onboard processing

Innovative solutions to enhance and expand AUV capabilities



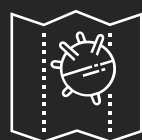
Tow, mooring & riser handling

Market-leading software for rig move positioning and anchor/riser simulation



Oceanography & environmental studies

Multi-purpose ROTV solution covering a wide variety of survey disciplines



UXO surveys

Proven technology for safe, cost-effective UXO surveys



Archaeology

Data collection and processing solutions to uncover history on the seafloor



Virtual buoys

Ensure safe waterway navigation with virtual marker buoys



Data buoys

Designed for high-end monitoring, built for long-term operational independence

Automation, autonomy & AI – all in one software suite

... for over-the-horizon,
remote & on-site operations

NaviSuite

Advanced software solutions ... for a wide variety of subsea tasks

A complete package – ranging from very high-end to the semi-professional use, with the same software at the core, tailored and bundled for different application types.

Our substantial software team ensures that the software evolves and new capabilities and application types are added to the entire product suite, including small (but important) requests, as well as new capabilities and modules.

One suite with many cost saving benefits

NaviSuite's many features allow our customers to **standardise** with our software, resulting in cost savings on not just licences but also on training and ease of rotation of staff.

Customers can **eliminate** the use of other packages, and thus reduce costs further while at the same time improving the efficiency of their work processes.

Simplification of features and inclusion of **automation, autonomy and AI** save costs through reduced man-hours – including continual improvements focusing on automatic **interpretation** of data through machine learning and deep learning features.

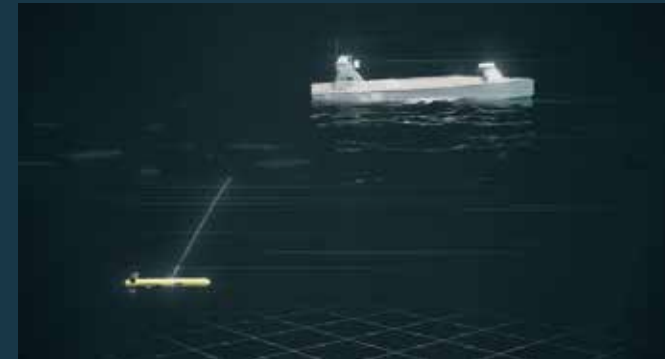
Different licence models for different needs

Available as **daily and annual subscriptions** – or as permanent licences, if preferred.

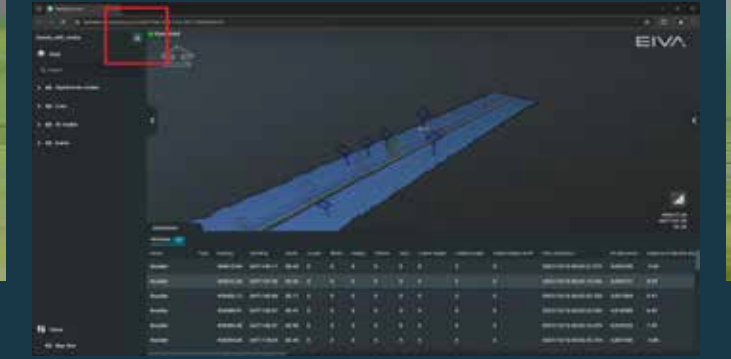
Latest news

Sailing forward with
further development
... covering new technologies
& advanced features

Dive into
recent news
articles



ViperFish integrated with ProZero 8m Naval Intelligence USV from Tuco Marine



NaviSuite Cloud – with a single link, share projects for immediate viewing in a web browser, plus now you can enable download!



Voyis VSLAM powered by EIVA NaviSuite – Real-time data quality control during ROV visual inspections with Voyis' Discovery camera – Generate high-quality 3D point clouds and navigation trajectory plots for augmented piloting



NaviSuite software toolbox for automating operations from planning to product

NaviSuite Nardoa

Advanced pipeline & cable route inspection ... with multiple automation tools

Offline surveyors
(On shore)

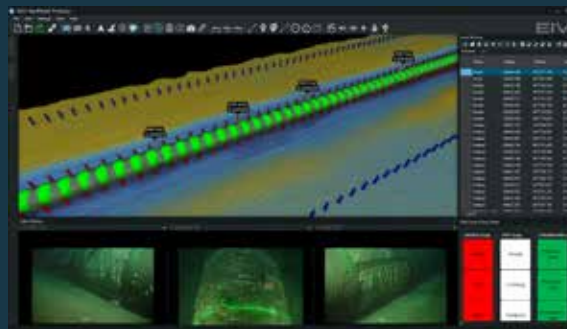
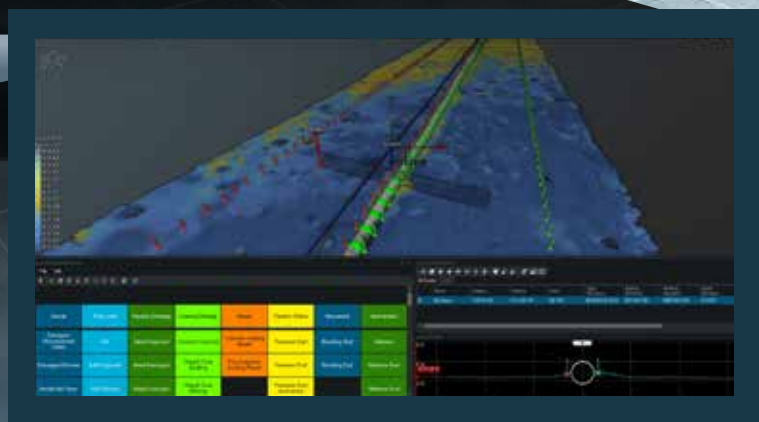


Optional number and
location of surveyors
working with the data

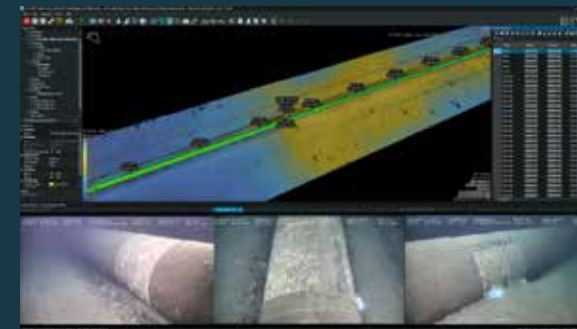
Online surveyors
(On board)



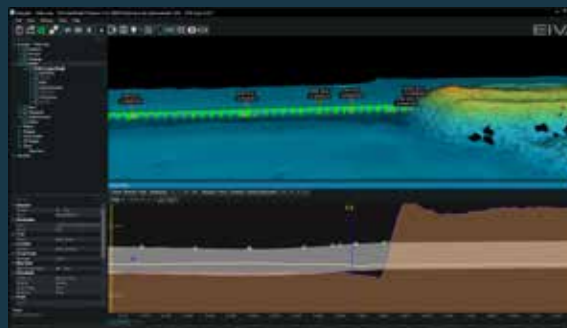
Learn more
and dive
into pricing



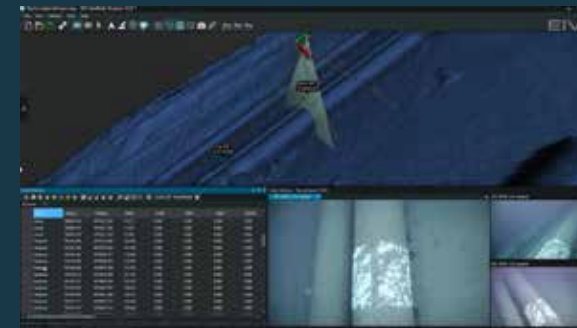
Eventing tool for configurable event registration and synchronised views



Data fusion allowing for combination of sonar, laser scanner, INS and camera data



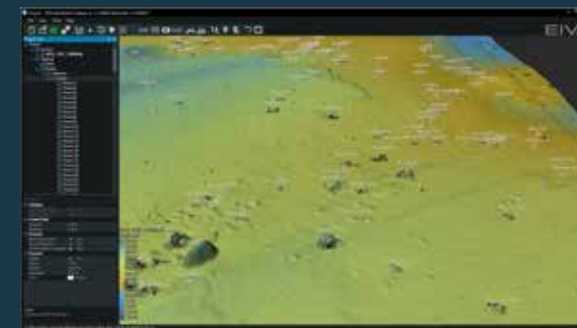
Eventing and pipe status quality control (freSPAN, depth of burial, etc) in 3D, 2D, tables or alignment sheets



NaviSuite Nardoa eventing tool – API lets you register events from NaviSuite Deep Learning or your own models



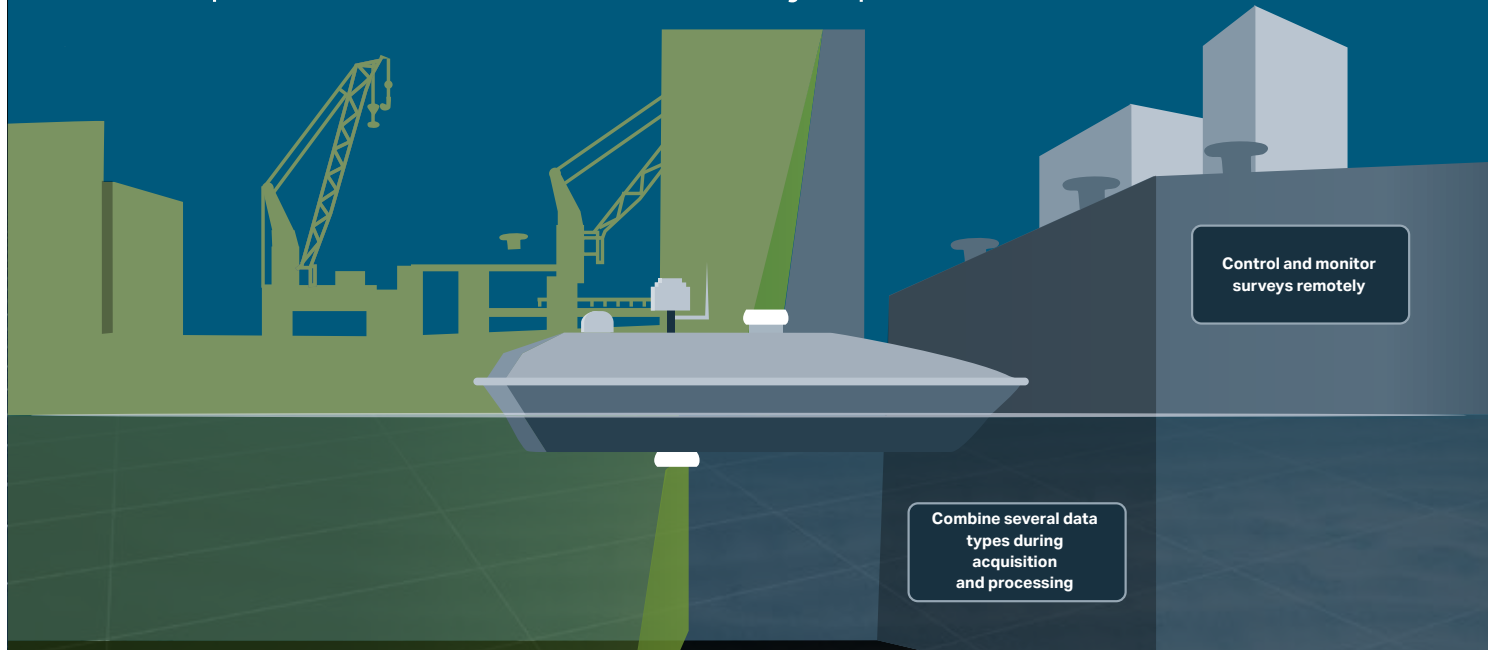
Workflow Manager allowing for automatic data processing



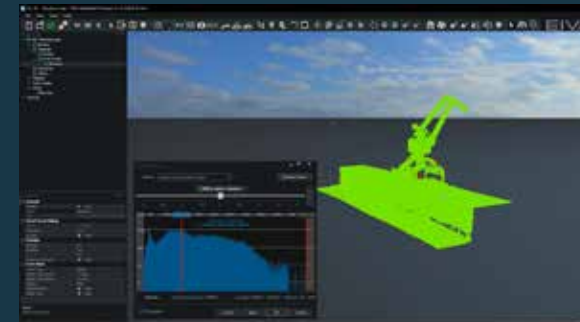
Find Object tool for automatic eventing of objects on the seafloor such as rocks, boulders and mines

NaviSuite Kuda

Deep feature list for hydrographic surveys
... with variants for USV / single vessel setups as well as complex and extensive survey operations



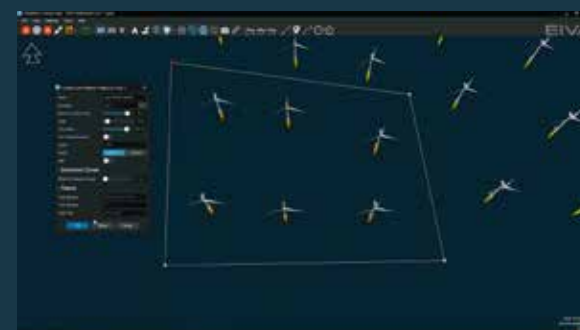
Check out how to use this software for a remote hydrographic survey



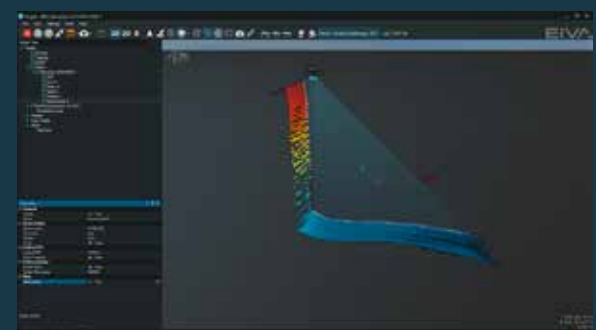
EC-3D cleaning tool supporting several cleaning methods for 2D and 3D data



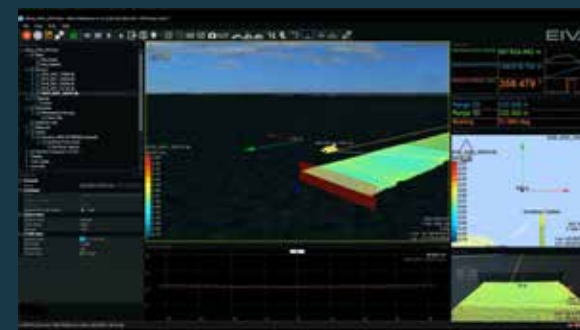
Real-time automatic adaptive runline generation based on the previous surveyed line



Advanced runline and navigation features, including automatically generated runline based on actual coverage of the sonar



Data down-sampling allowing for real-time display at remote command centre with standard internet connection



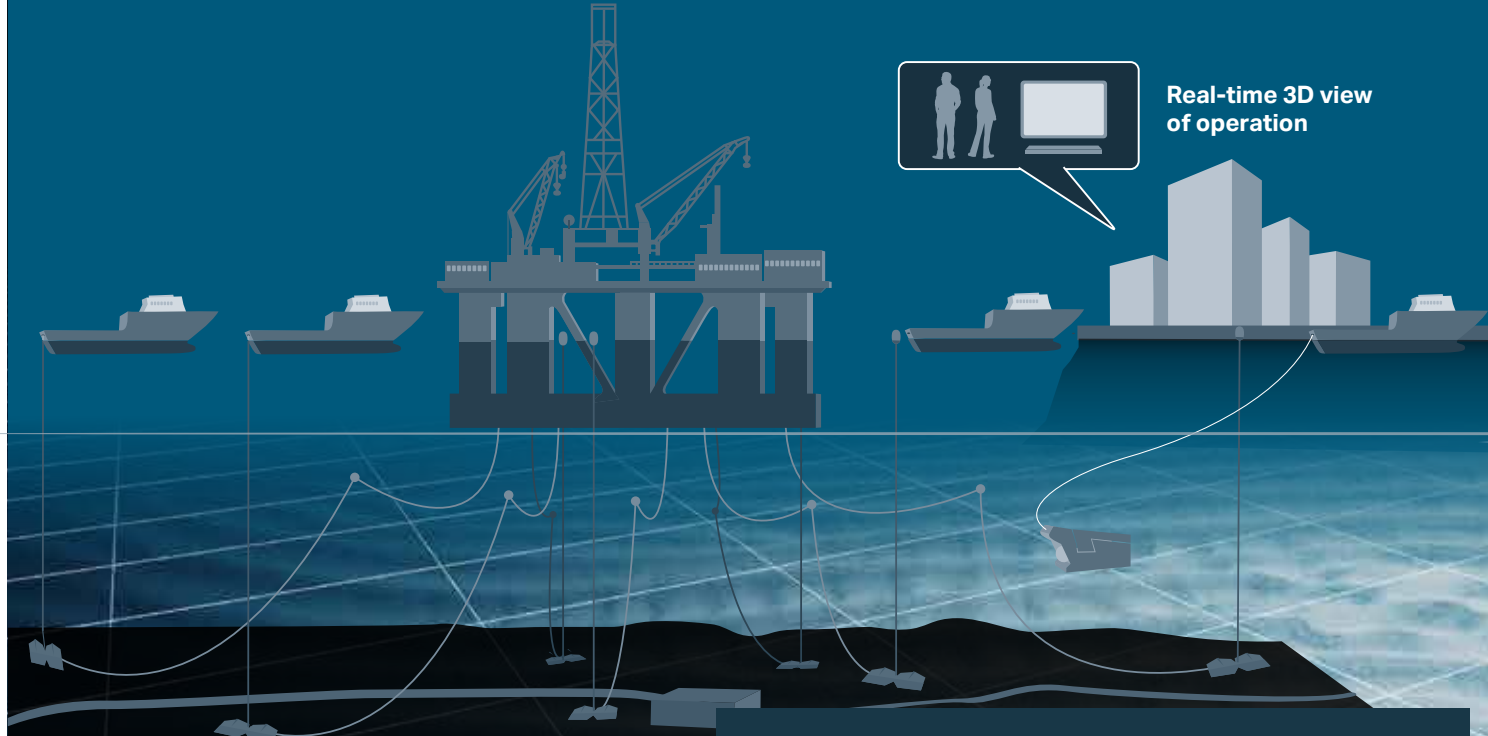
Autopilot integration for operating USVs or steering manned vessels



Real-time quality control displays streamed to remote operations centres

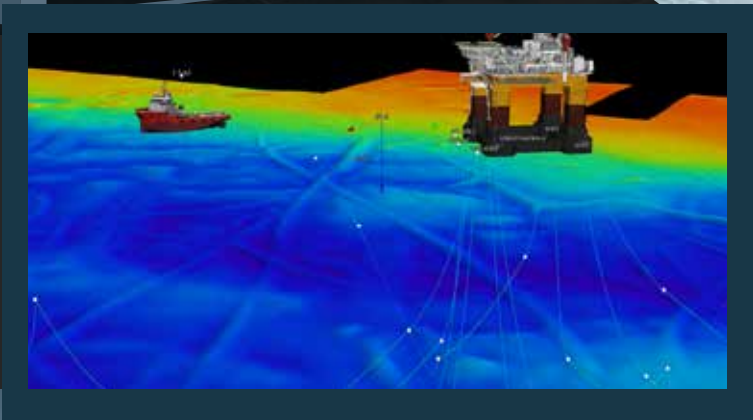
NaviSuite Beka

Efficient anchor handling operations
... with advanced catenary simulation



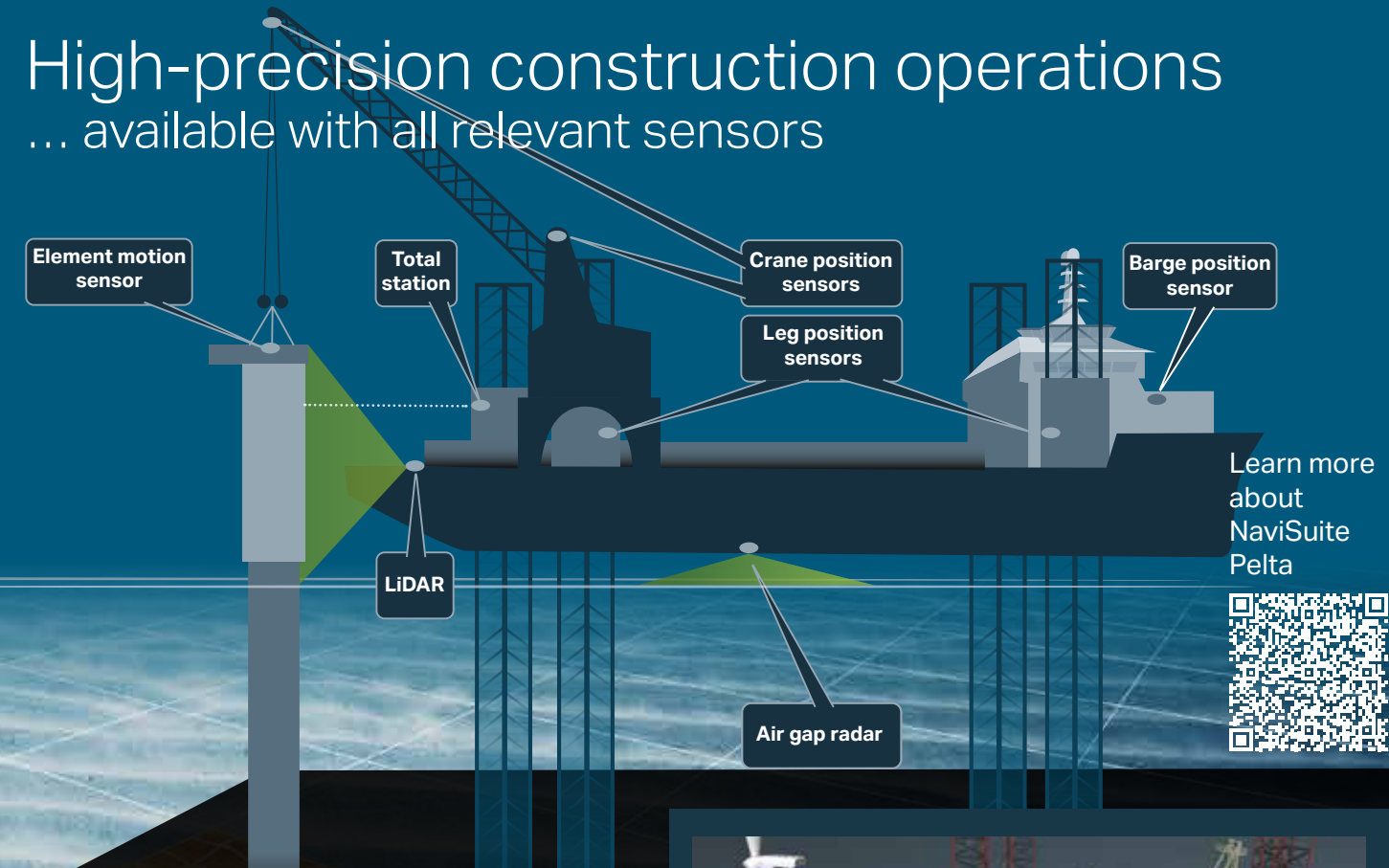
Anchor handling software widely used by companies throughout the world

- Live barge and tug positions
- Planning of anchor patterns
- Live simulation of anchor position / catenary
- Communication between barge and tugs
- Tug control from barge
- Remote monitoring and control from shore



NaviSuite Pelta

High-precision construction operations
... available with all relevant sensors



Learn more about NaviSuite Pelta



NaviSuite has been involved in the setup of most offshore wind farms worldwide and is installed on most of the large jack-up vessels in operation

- Vessel positioning and jack-up monitoring
- Crane and element positioning
- Measurement of verticality, height, etc
- Integration of video, sonar, LiDAR and other sensors



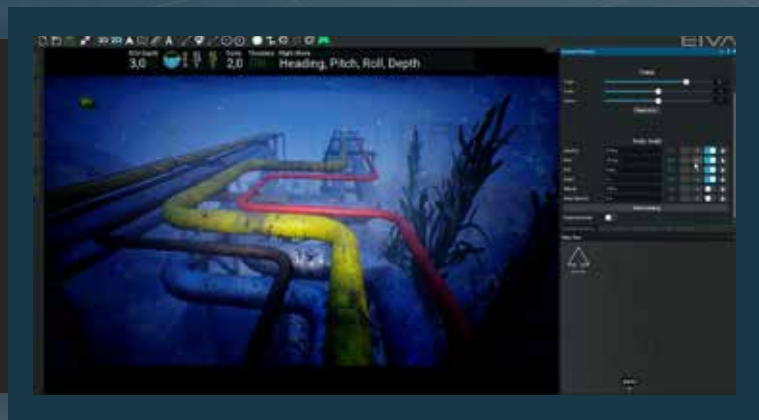
NaviSuite Mobula

Fully integrated ROV inspection package
... with a high degree of automation

Read a case study about NaviSuite Mobula



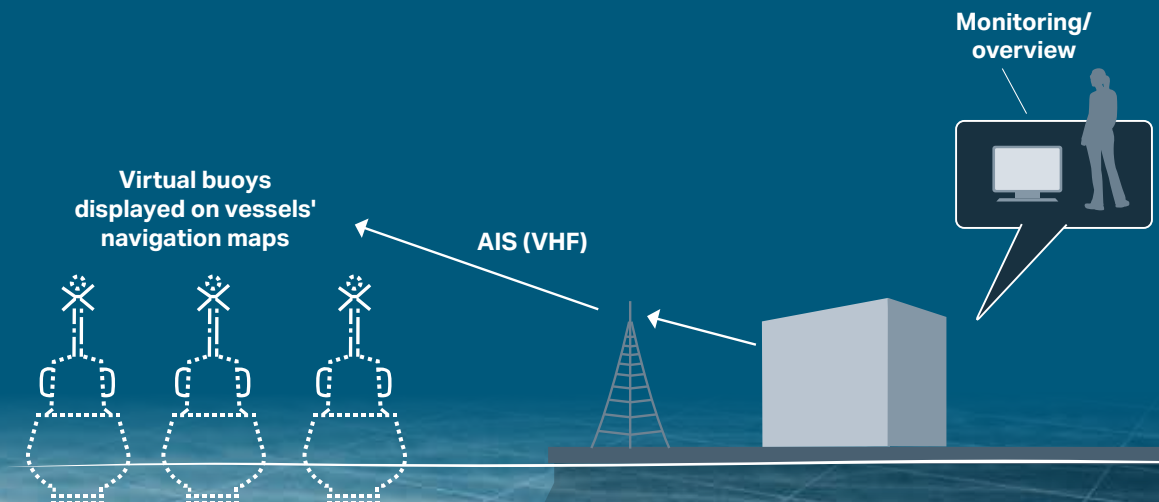
- Manual, assisted and automated steering
- incl scan wall, station keeping and orbit modes
- Sonar/laser scanner data acquisition/processing
- 3D display: data fusion, maps and ROV track
- Video recording and replay
- Easy interfacing and configuration of sensors
- Strong thruster control and support of positioning equipment



NaviSuite Perio

Ensure safe waterway navigation
... with virtual marker buoys

Read a case study about NaviSuite Perio



Save money with virtual navigation aids

- 3D visualisation of seabed, navigation maps, etc
- Placement of buoys on exact locations
- Buoys appear on all AIS-enabled vessels nearby
- Built-in quality check
- AIS AtoN standard
- Up to 250 buoys from a single transmitter



ATTU

Accurate time tagging ... for improved survey results

Learn more
about EIVA's
ATTU



The ATTU can be applied in any survey set-up that includes EIVA's navigation and data acquisition software solutions, such as NaviSuite Kuda or NaviPac and NaviScan.

ATTU ensures a time-tagging accuracy that is better than 50 μ Sec.

Knowing the when and where of your sensor data is an essential element when you want optimum accuracy and high-quality data of your survey operations.

This rack-mounted unit enables plug'n'play installation into existing solutions.



Curious to dive into EIVA customer stories?



NaviSuite Kuda
Civil Tech

'Thanks to its automation tools and user-friendly, streamlined interface, NaviSuite Kuda Core is a great software solution for remote surveys. I have found that the Coverage Assist real-time runline creation tool steers the USV more accurately than a human would be able to, helping the surveyor to ensure efficient area coverage and high-quality data – overcoming challenges of shallow water conditions.'

Kasper Engblom, Technical expert at Civil Tech Oy Ab



ScanFish Katria
GEOxyz



'Over the course of a few months, I went from having no experience operating ScanFish to deploying three ScanFish simultaneously – a setup which allowed us to speed up the data acquisition process.'

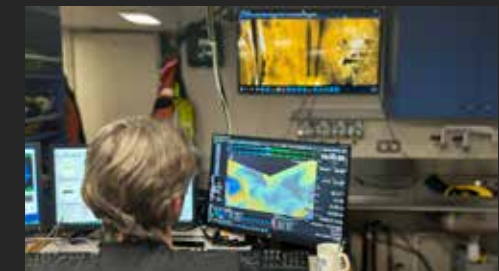
Darren Kirkwood, Survey engineer at GEOxyz



ScanFish Equinox
Reach Subsea

'We imaged small objects, which we would never have been able to detect with a conventional sidescan sonar, thanks to Equinox's high-resolution Solstice multi-aperture sonar. We were able to save a lot of time and deliver higher quality data with the stable 3D control of the ScanFish ROTV platform and the positioning accuracy provided by the combination of USBL and INS.'

Thorbjørn Ekfeldt, Project Manager at Reach Subsea

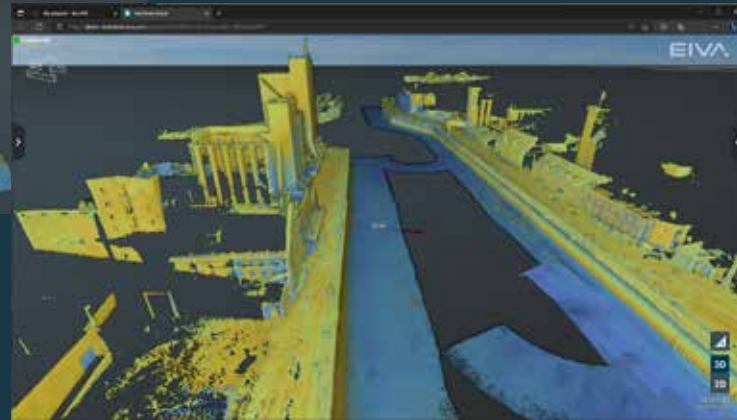
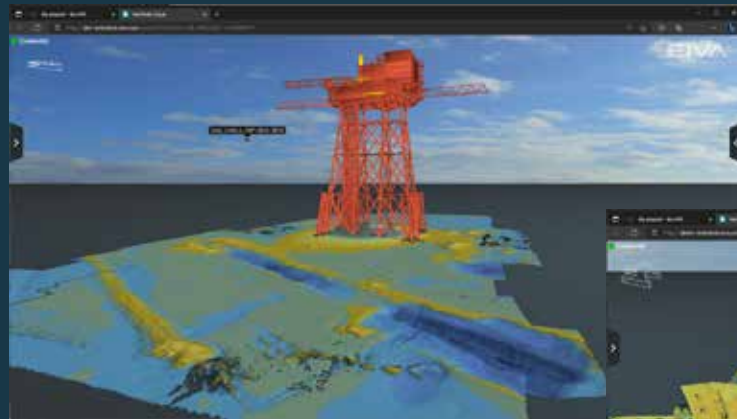


NaviSuite Cloud

Information sharing made easy ... with a cloud-based NaviSuite thin-client

... view and download projects
– access from a web browser on any device

Simple and fast survey information sharing
– no need for special software installed



High performance rendering of 3D models
– as powerful as in NaviSuite desktop software

Manage projects and share them in public or private
URLs – in the My EIVA web portal



Register observations with NaviSuite's eventing
functionality. View events marked in the 3D scene and
see annotations, image, and nearest point in video
playback.

See a video
of this
thin-client in
action



Find our solutions in our webshop



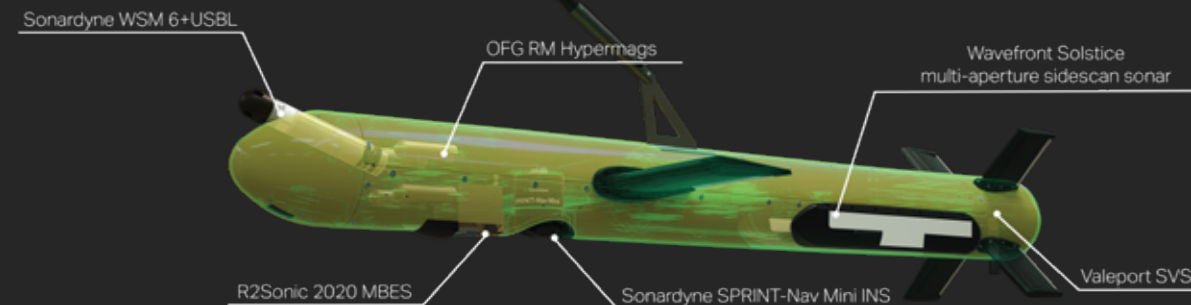
System solution partner ...riding the newest waves of technology

Innovative solutions based on an R&D process with high customer involvement

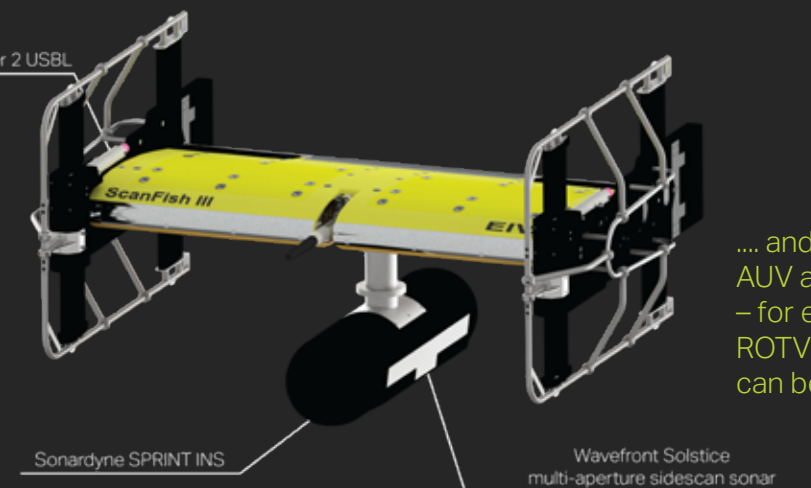
Single pieces of equipment or complete system solutions installed and commissioned on site

Standard products or one-off tailored solutions offering a perfect match for your needs

Integrate our software and hardware solutions with the sensors you need. For example, we have developed total solutions integrating these sensors...



Sonardyne Mini-Ranger 2 USBL

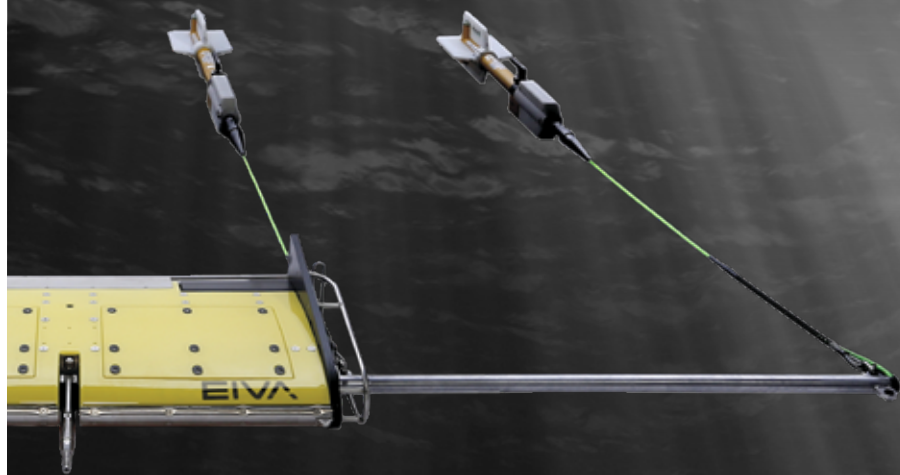


.... and augment your ROV, AUV and USV operations – for example, the ViperFish ROTV and NaviSuite Kuda can be leveraged by a USV

ScanFish

Affordable & flexible ROTV range

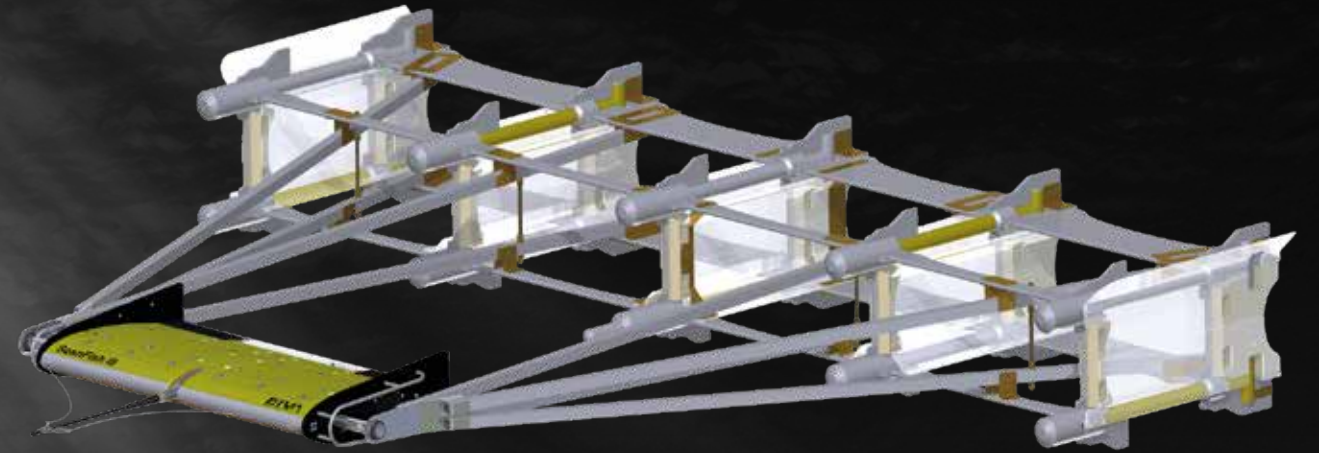
... with the possibility of tailored solutions



Control the position of your sensors in the water column

Terrain-following and full water-column operation modes

3D steering option for control of the ROTV's horizontal movements



ScanFish Katria

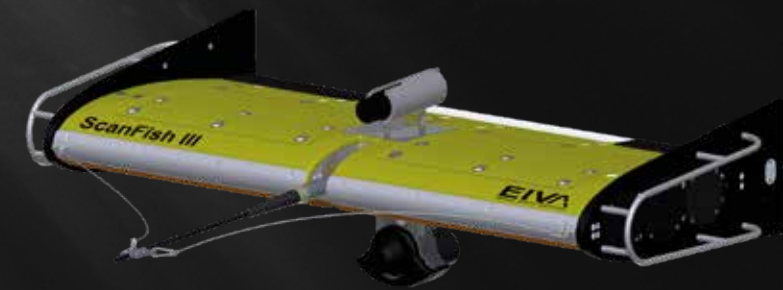
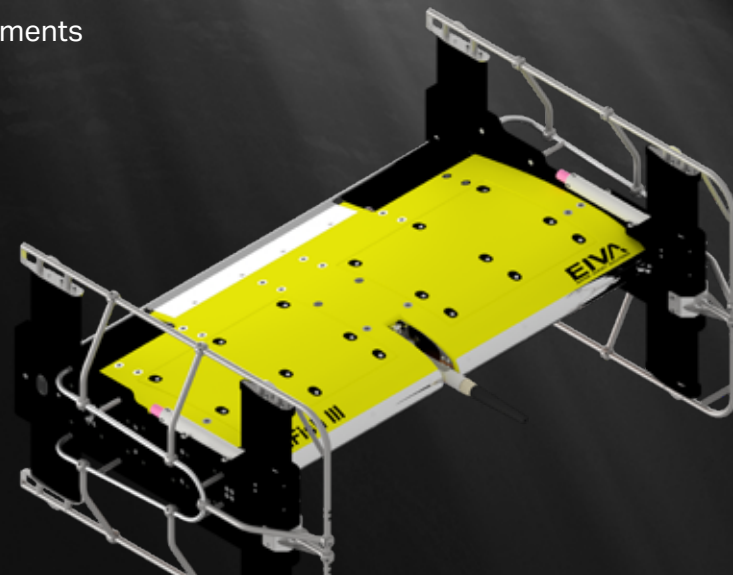
Intelligent wide-sweep ROTV for magnetometer surveys

ScanFish Rocio

Multi-purpose ROTV for oceanographic surveys

ScanFish L & XL

Larger ROTVs allowing for payload of up to 400 kg



See this solution in action



ScanFish Equinox

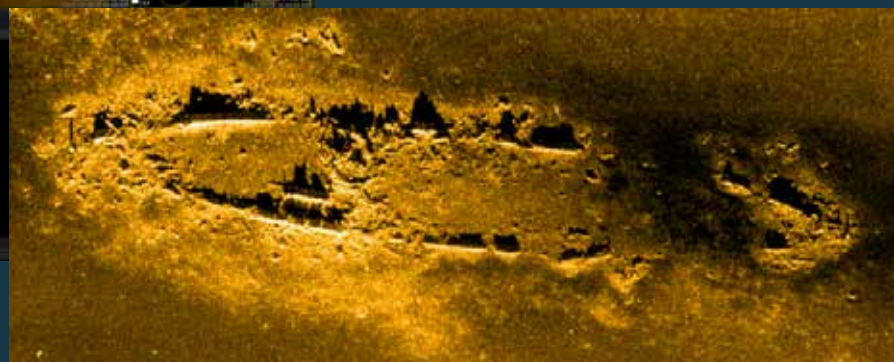
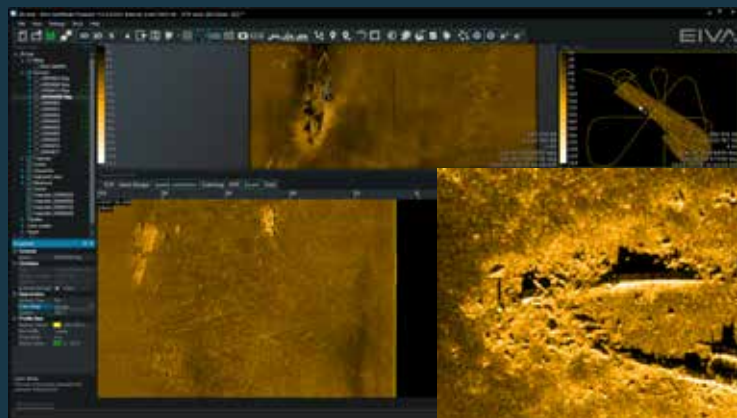
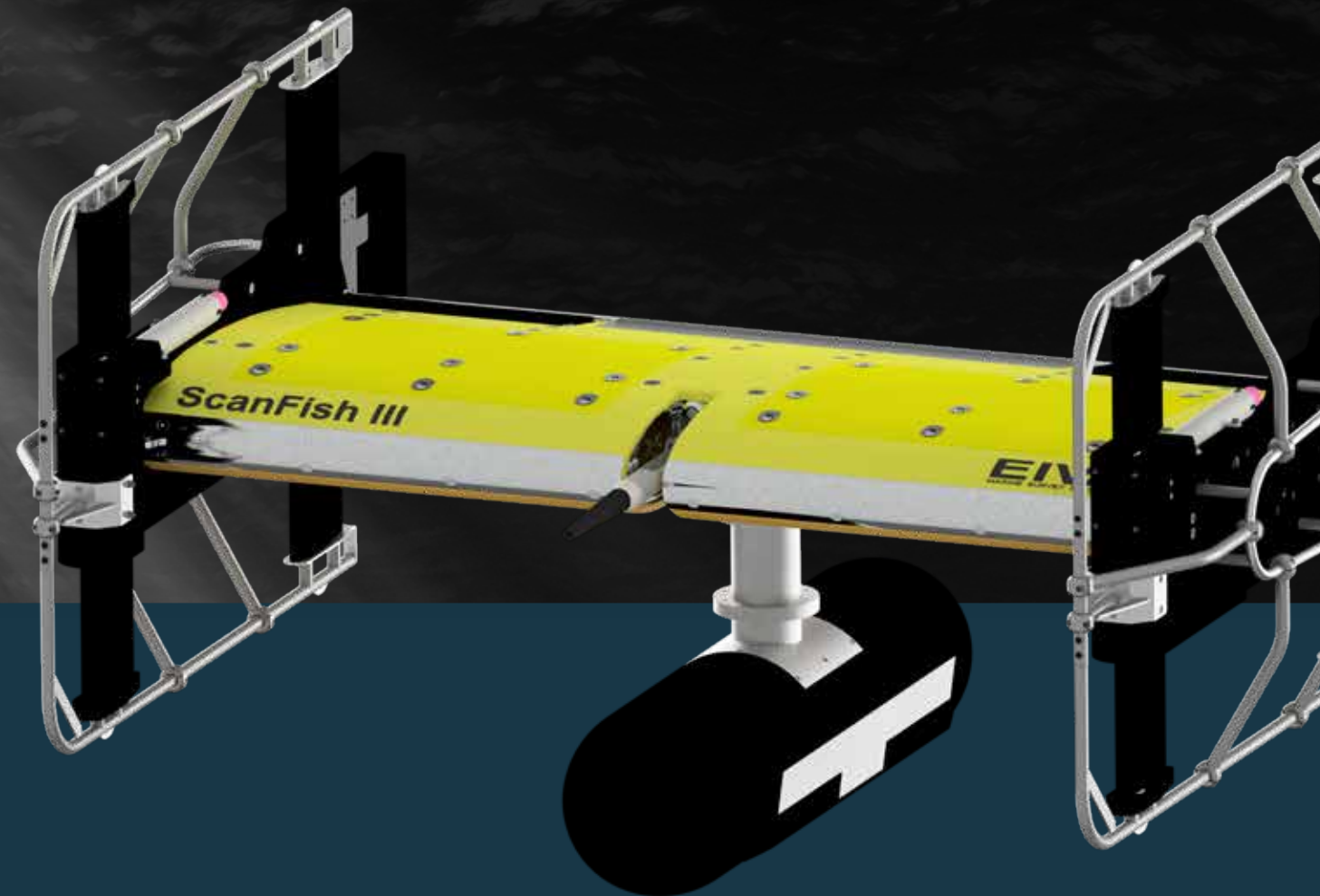
Intelligent, towed multi-aperture sidescan sonar solution

Achieves improved area coverage rates for UXO (unexploded ordnance) surveys, MCM (mine-countermeasures) and hydrographic operations, such as site surveys pre-installation of renewable energy sites

Provides unrivalled stability, position accuracy and results in real time

Solstice multi-aperture sidescan sonar delivering imagery of the highest quality possible from sidescan sonars

Includes NaviSuite software for AI-based detection and classification of seafloor objects across the whole swath



Read a case
study about
Equinox



ViperFish

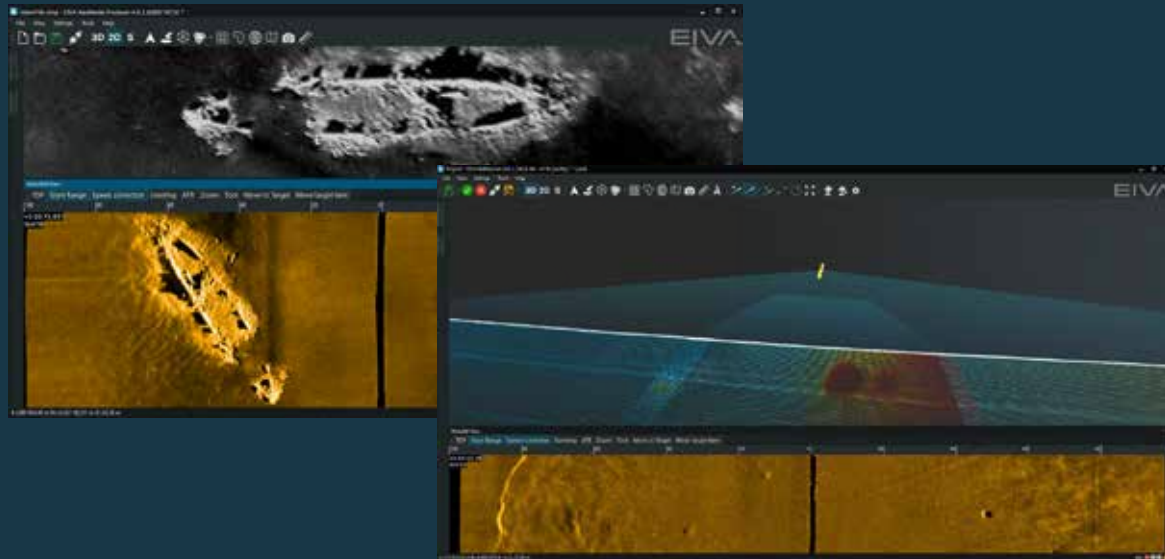
3D steerable survey solution for towing by USVs and small vessels

Ideal ROTV solution for autonomous UXO surveys, MCM, pipeline inspection, wreckage surveys and more

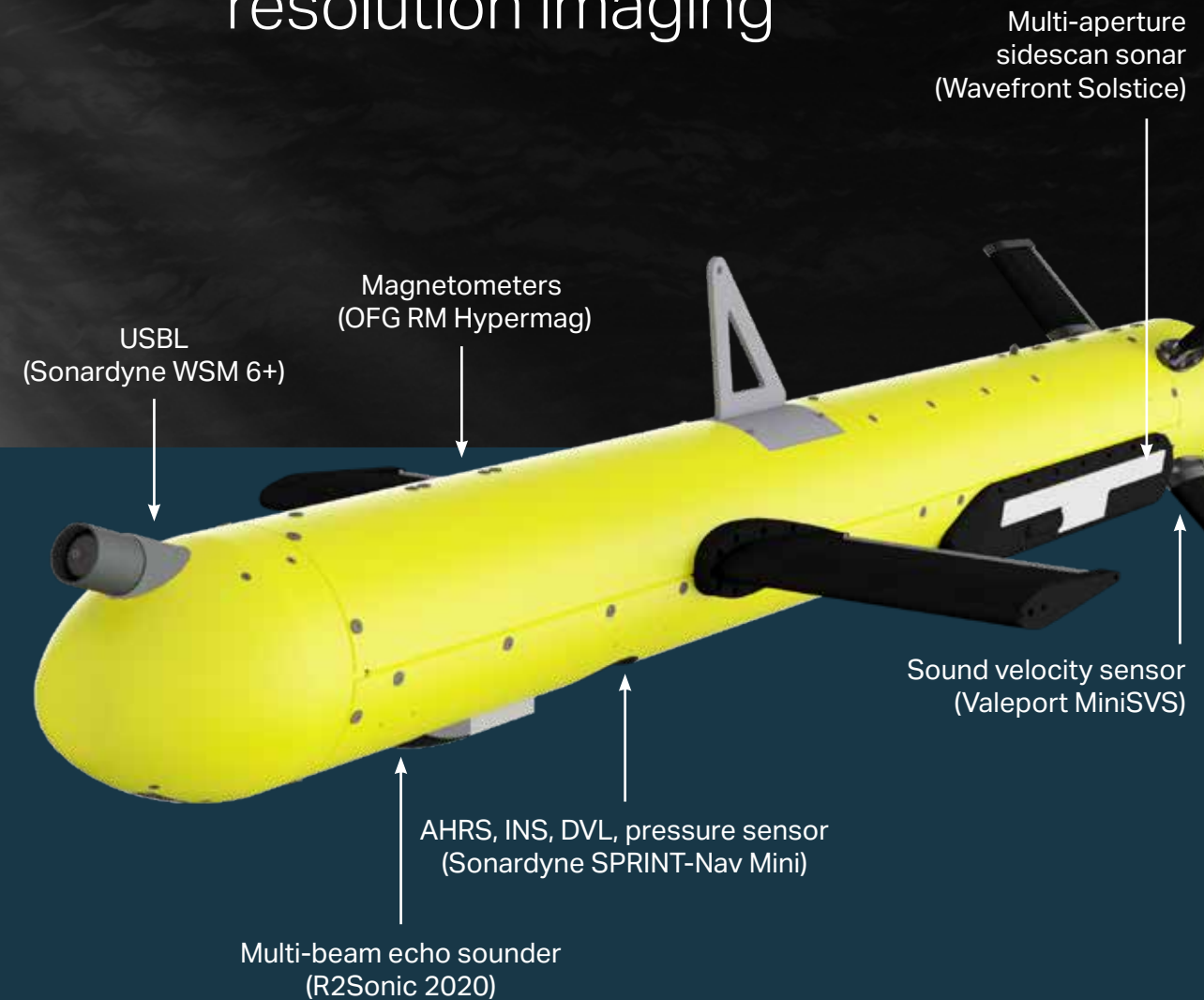
Safely scan hard to reach areas with sensors at a fixed height, close to the seabed

Dedicated winch interfaces to ROTV Flight software enabling autonomous deployment and recovery

Precise positioning and high-resolution imaging

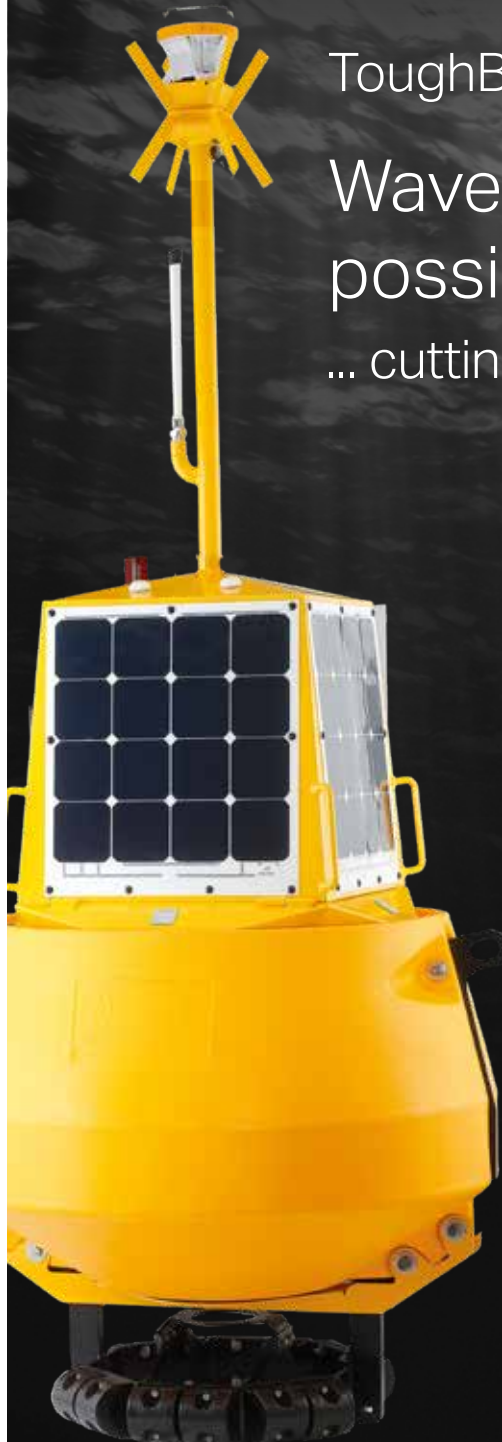


See what ViperFish can do



ToughBoy Panchax

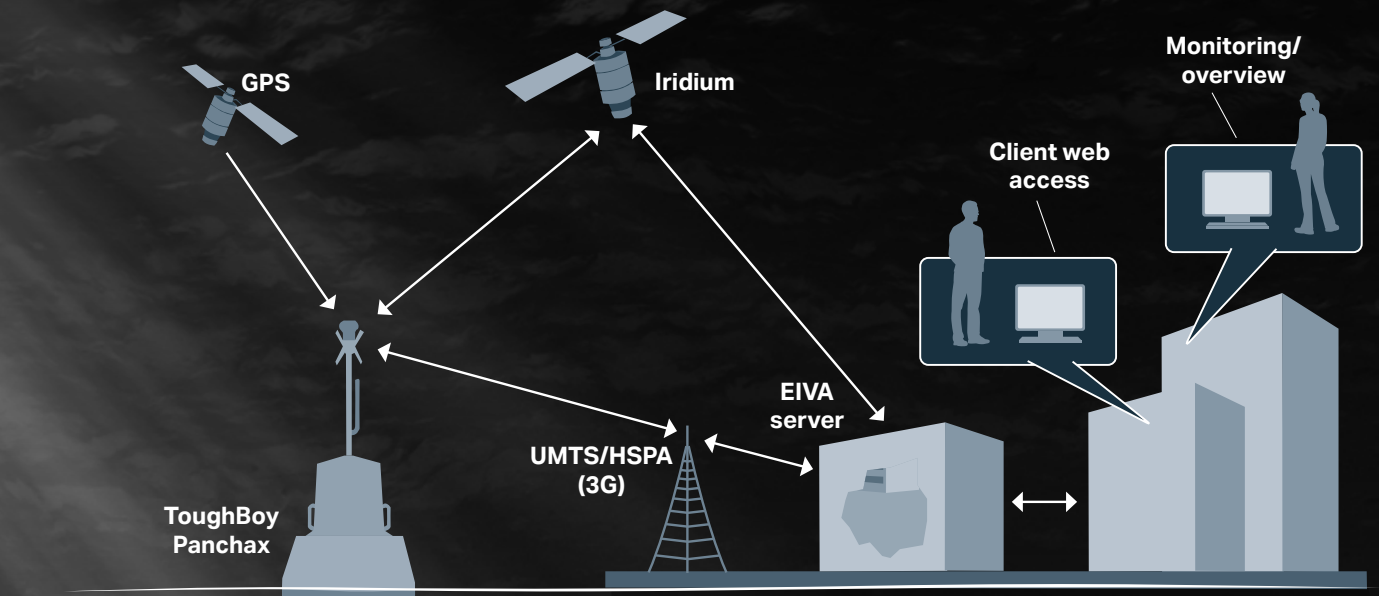
Wave buoy with lowest possible total cost of ownership ... cutting costs without compromising data quality



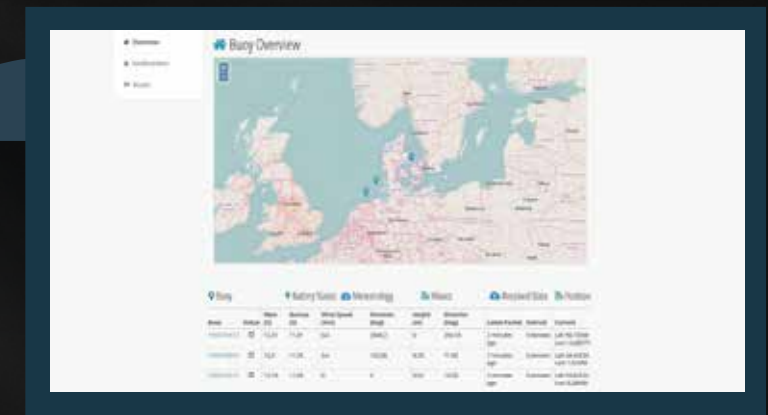
Competitive purchase price together with with low cost of service and communications

State-of-the-art, integrated ADCP and thoroughly-tested, advanced wave sensor

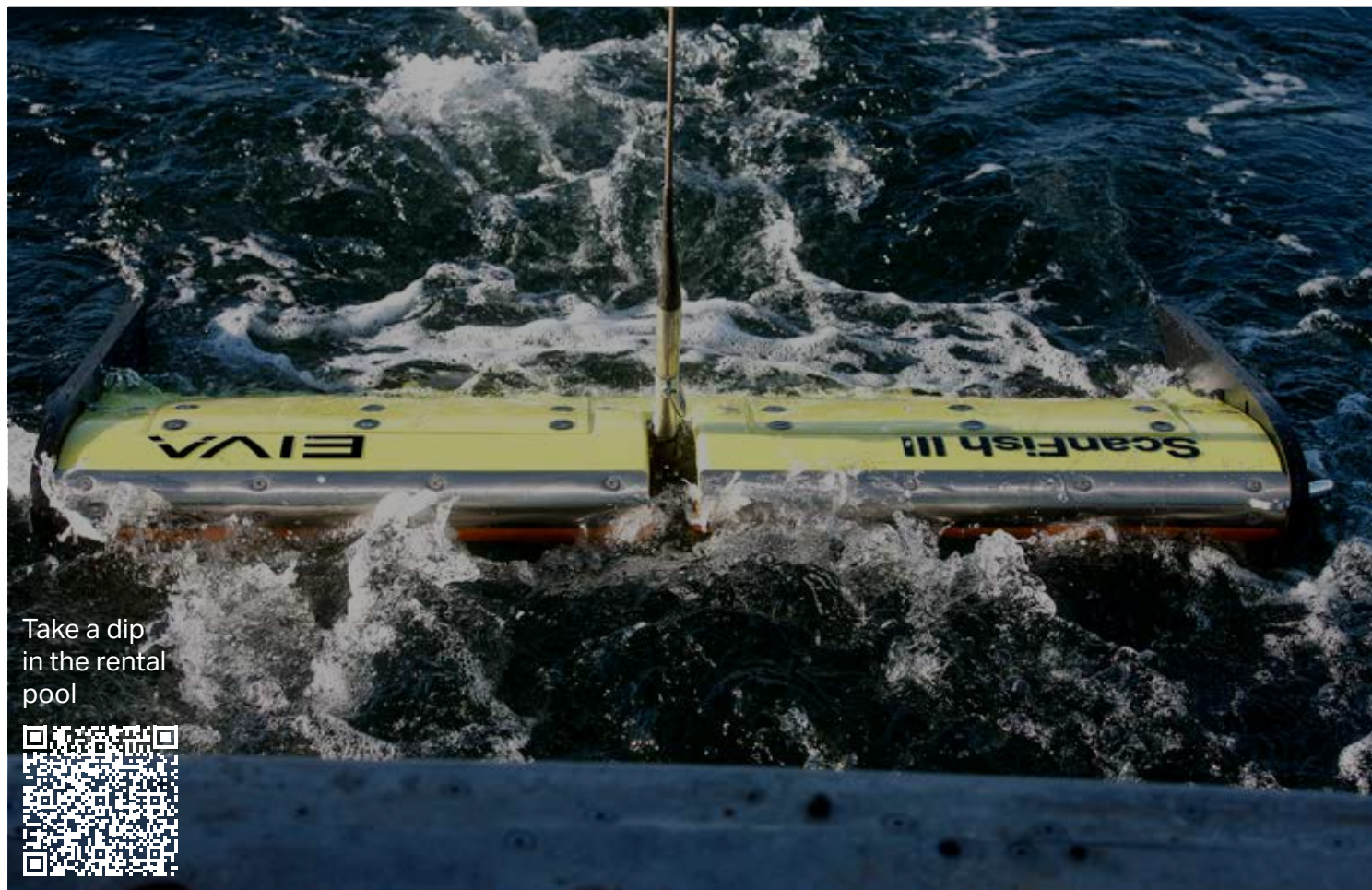
From harbour monitoring and subsea engineering pre-surveys to wave energy studies and any type of wave and current measurement surveys in between



Watch how easy it is to deploy



| ID | Lat | Long | Depth | Height | Weight | Location | Last Deployed | Status | Comments |
|----------|-------|-------|-------|--------|--------|------------|---------------|--------|----------|
| 10000001 | 51.50 | -1.50 | 10 | 10 | 1000 | Portsmouth | 2010-01-01 | Active | |
| 10000002 | 51.50 | -1.50 | 10 | 10 | 1000 | Portsmouth | 2010-01-01 | Active | |
| 10000003 | 51.50 | -1.50 | 10 | 10 | 1000 | Portsmouth | 2010-01-01 | Active | |
| 10000004 | 51.50 | -1.50 | 10 | 10 | 1000 | Portsmouth | 2010-01-01 | Active | |
| 10000005 | 51.50 | -1.50 | 10 | 10 | 1000 | Portsmouth | 2010-01-01 | Active | |



Take a dip
in the rental
pool



Renting ...could be your most profitable buy

Try before you buy

Long list of solutions to choose from, covering software, hardware and system solutions
– basically everything you see in this brochure, including technical assistance

We do not rest until you've set sail with the optimal solution



Check out
our support
offerings

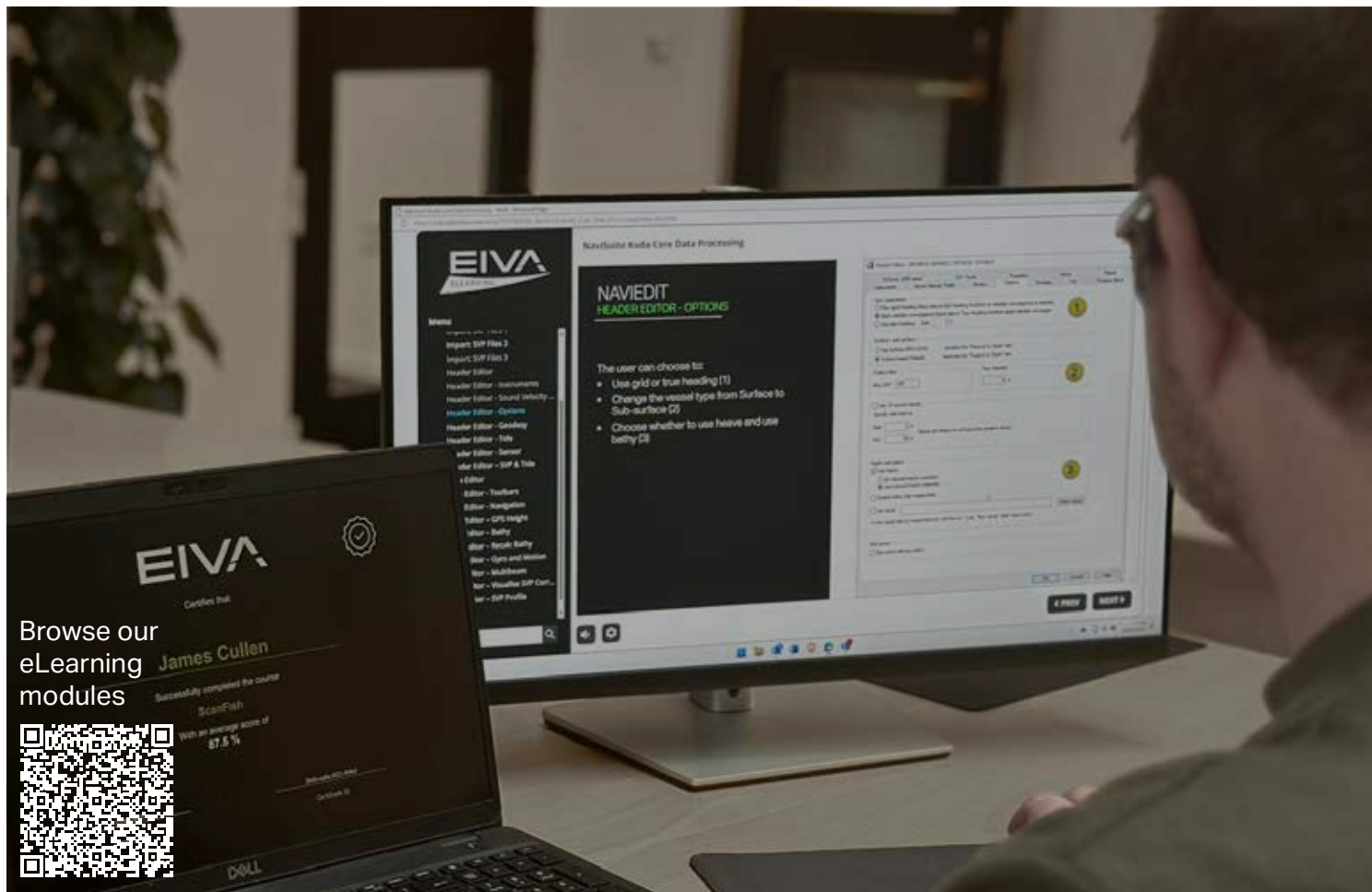


We're ready to help 24/7 ...if the wind is taken out of your sails

24/7 hardware and software support, all year round, by a dedicated team operating from Europe and Asia.

Qualified team of surveyors, technicians and engineers who know the drill

On- or off-site assistance for mobilisation and as part of a project, depending on your needs



Browse our eLearning modules



Teaching you the software ropes with eLearning

Upgrade your skills whenever and wherever you want through an annual subscription

Track and document learning progress and achievements

Get your crew on board at a reduced price via a corporate account



Upcoming training courses

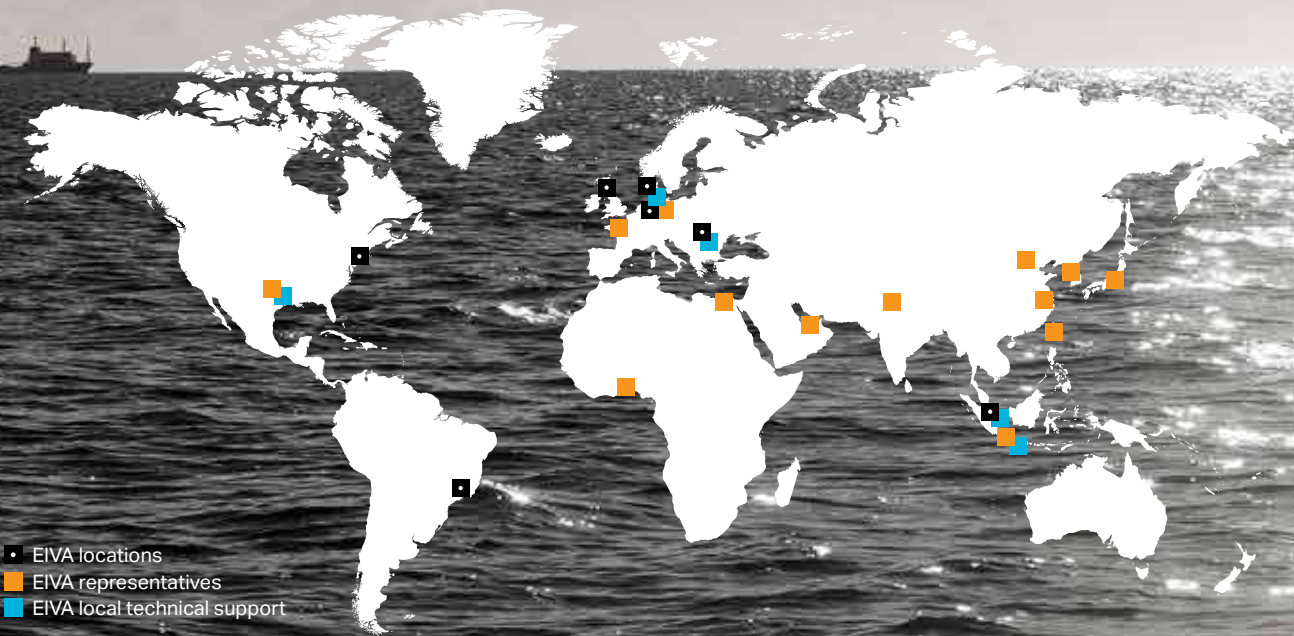


... and training courses

Supplement eLearning with training courses covering advanced features and exercises

Standardised and tailored courses as classroom training throughout the world – including at your premises – or virtual training

Experienced instructors and international network of strategic training partners







- EIVA locations
- EIVA representatives
- EIVA local technical support

Headquartered in Denmark
Founded in 1978
Fully owned subsidiary of Covelya Group
In-house R&D department and training course facilities
Financially strong
ISO 9001-certified

Want to further explore the EIVA sea?

 eiva.com
 eiva@eiva.com
 +45 8628 2011

 [company/eiva-HQ](https://www.linkedin.com/company/eiva-HQ)
 [eivaHQ](https://www.youtube.com/eivaHQ)
 [eivaHQ](https://www.facebook.com/eivaHQ)
 [eiva_HQ](https://www.instagram.com/eiva_HQ)

EIVA